

“Running Google Earth on Linux”

How to install **Google Earth**
on Linux Suse 10.0 using VMware in 5 steps?

By Frank Neugebauer

<http://www.linux-tip.net>

linux-tip@web.de

Last Modified: 05/04/2006 14:20:00



0. Introduction

Google Earth was created to put satellite imagery and other geographic information right on the (Windows) desktop. Unfortunately no Linux version is available yet. In the meantime the Linux Community was trying to get Google Earth running on a Linux Desktop. This Tutorial will explain how to install and run it using VMware Player. VMware Player is free software that lets you evaluate new or pre-release software contained in virtual machines, without any installation or configuration hassles. It runs any virtual machine created by VMware Workstation, GSX Server or ESX Server.

VMware Workstation is desktop virtualization software that runs multiple operating systems simultaneously on a single PC. It delivers excellent performance and advanced features such as memory optimization. We'll use it to create a Windows XP virtual machine. This can be done with the Evaluation Version (30 day) and an evaluation license. We'll later run Google Earth with the free VMware Player. Except for the Windows Software you will be able to run GoogleEarth free of charge on a Linux machine.

Step 1: Getting the software

To get the whole thing running we need the following software:

- Suse Linux 10.0
http://www.novell.com/products/suselinux/downloads/suse_linux/index.html
- VMware Workstation
<http://www.vmware.com/download/ws/>
- VMware Player
<http://www.vmware.com/download/player/>
- Google Earth
<http://earth.google.com/>
- Windows XP Installation CD

You should have Suse 10.0 installed on your PC and should store the VMware software in the user's home directory. In this workshop I stored everything in **/home/frank/installations**. To get your 30-day trial version of VMware Workstation running you have to register here:

<http://www.vmware.com/download/ws/eval.html>

Please make sure to get a trial license key by email.

Make the Windows XP Installation CD available and look for a proper Windows XP license key. Alternatively you can also use a Windows 2000 Installation CD. You should get a proper license for less money.

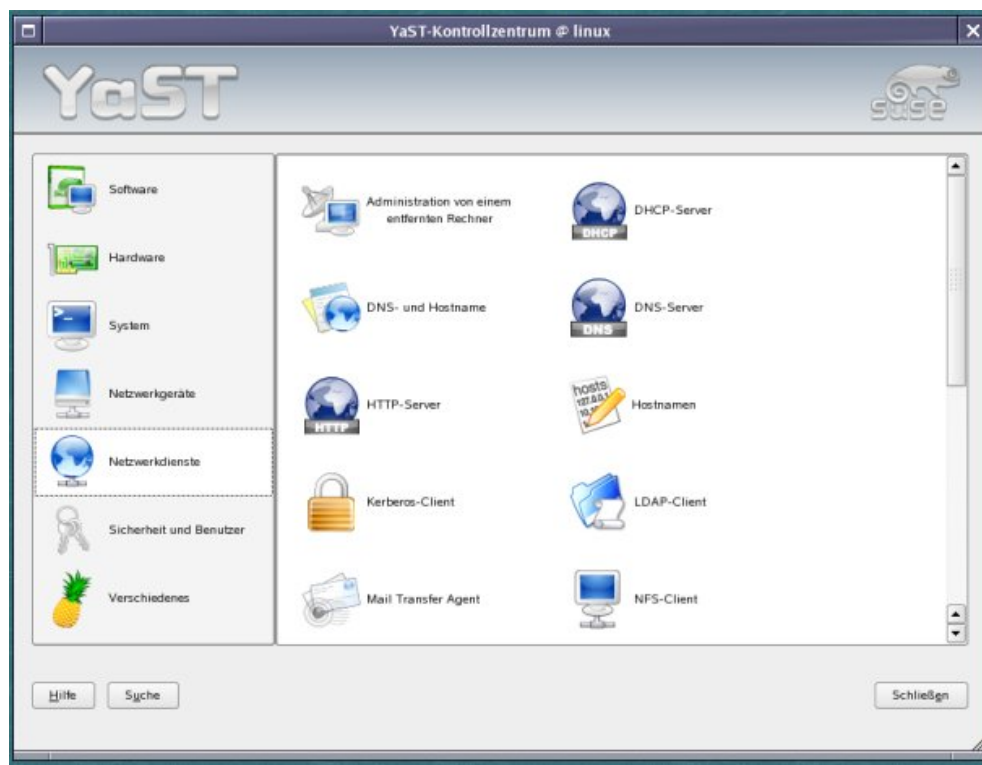
Step 2: Suse 10.0 Installation

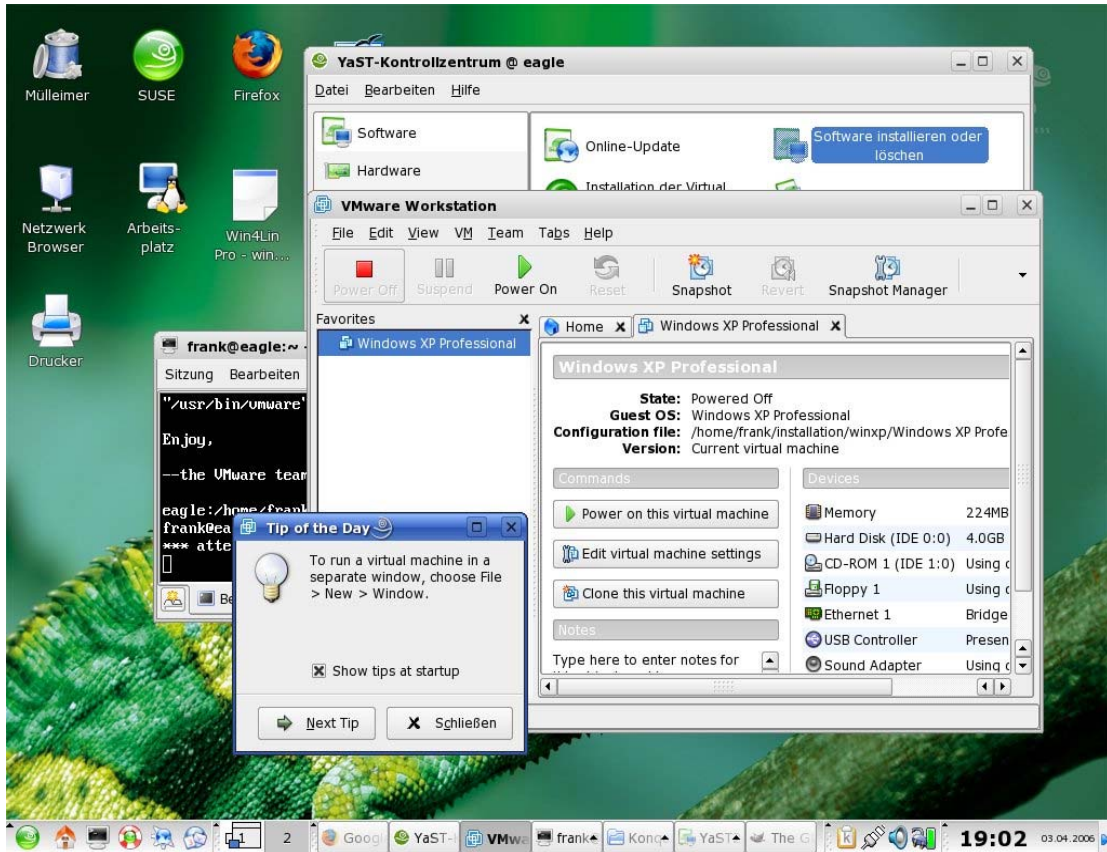
I don't want to explain how to install Suse. It is very easy these days. If you need help, please use the following link:

<http://www.linux.org/dist/reviews/suse10.html>

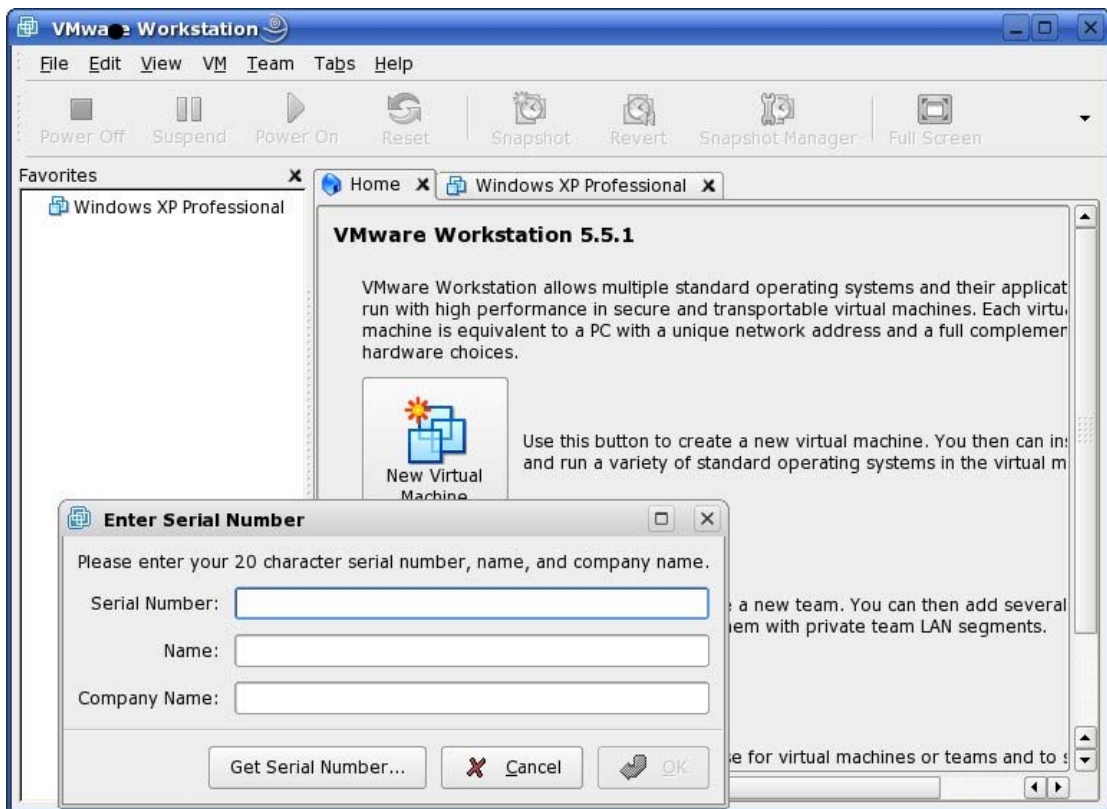
It is now time to specify which programs you wish to install on your system. There are thousands of packages available for *SUSE Linux*, and to make it simpler to manage the packages have been placed into groups of similar applications. We just need a basis system. Save time and hard disk space and just install the necessary files. Please make sure to install Microsoft True Type Fonts.

Remark: You will later have the possibility to add and remove software packages using YAST.





Its time to enter the serial number you received by email after the registration. Go to **Help – Enter Serial Number** and fill the required data in.



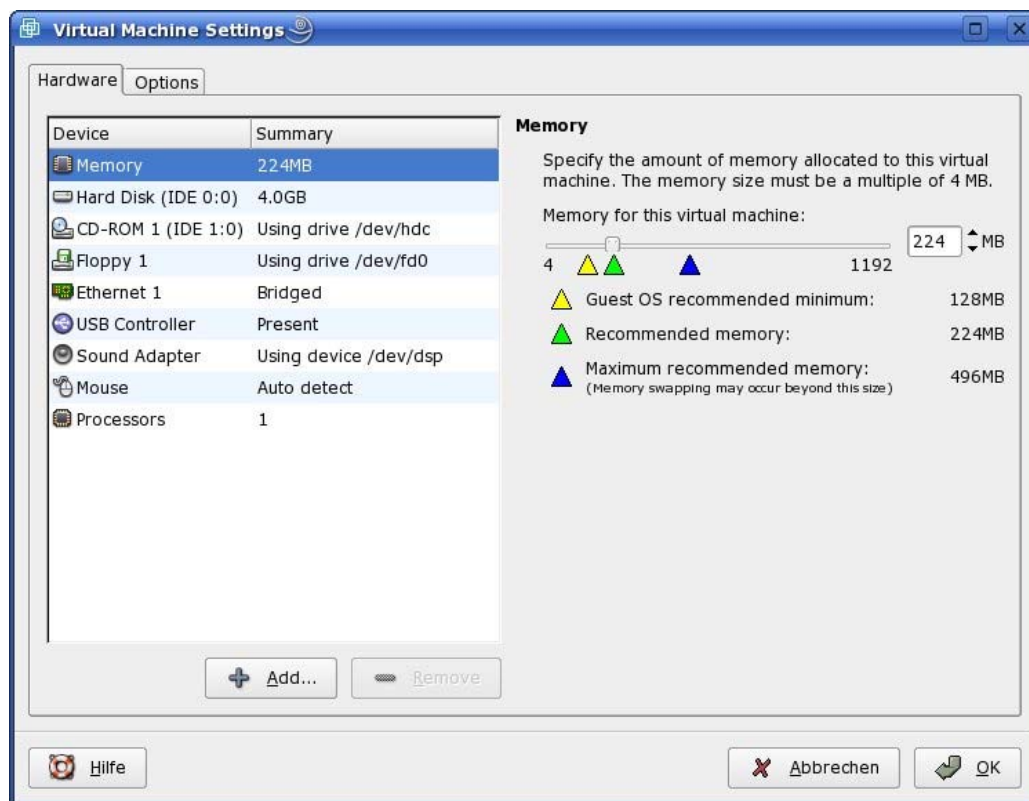
Create a new virtual machine and use the wizard to select your Operating System and location in which you would like to store everything. Please make sure to remember it later.



I recommend using "Disk Size" not larger than 4 GB and please do not split disk into two files. (see settings below):



You can also change the hardware settings to your needs. If you have enough RAM available, you can specify the amount of memory allocated to your virtual machine.

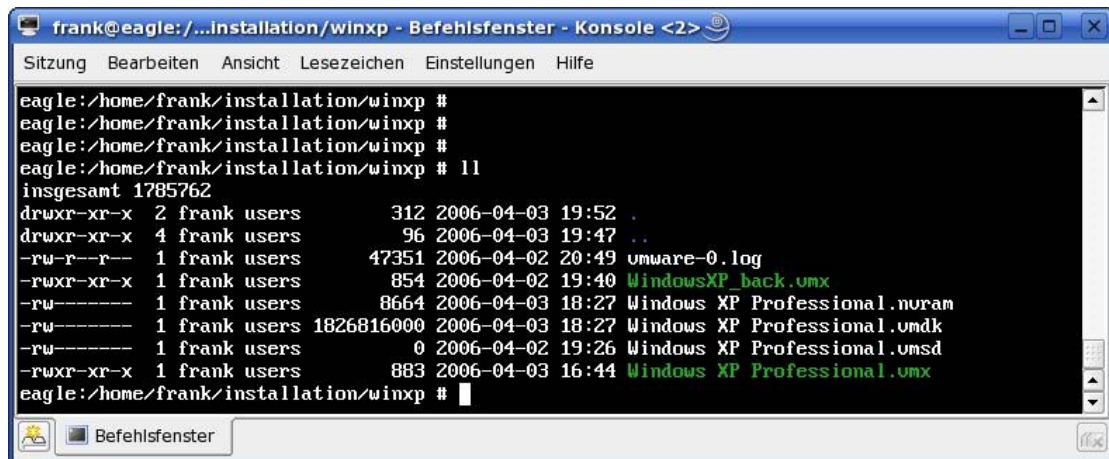


After configuring the system you can start the Windows installation by inserting the Windows installation CD in your CD-ROM device and clicking on the “Power on” button. VMware should automatically boot from the CD and start the installation process. You also have the possibility to change the boot options. Yes - VMware comes with virtual BIOS. Just hit the F2 button to set it up if necessary.

Depending on your hardware, it will take a few minutes to install Windows on your system. Everything will be installed in one single file on your Linux PC. Please check this file after the installation. If you used the location according to the settings above, you should find the *.vmdk file here:

`/home/frank/vmware/Windows XP Professional`

Additionally VMware will create some more files in the same directory like you can see below. The VMware Player will need it to run the virtual machine.



```
frank@eagle: /.../installation/winxp - Befehlsfenster - Konsole <2>
Sitzung Bearbeiten Ansicht Lesezeichen Einstellungen Hilfe
eagle:/home/frank/installation/winxp #
eagle:/home/frank/installation/winxp #
eagle:/home/frank/installation/winxp #
eagle:/home/frank/installation/winxp # ll
insgesamt 1785762
drwxr-xr-x 2 frank users      312 2006-04-03 19:52 .
drwxr-xr-x 4 frank users      96 2006-04-03 19:47 ..
-rw-r--r-- 1 frank users    47351 2006-04-02 20:49 vmware-0.log
-rwxr-xr-x 1 frank users      854 2006-04-02 19:40 WindowsXP_back.vmx
-rw----- 1 frank users     8664 2006-04-03 18:27 Windows XP Professional.nvram
-rw----- 1 frank users 1826816000 2006-04-03 18:27 Windows XP Professional.umd
-rw----- 1 frank users      0 2006-04-02 19:26 Windows XP Professional.umsd
-rwxr-xr-x 1 frank users      883 2006-04-03 16:44 Windows XP Professional.vmx
eagle:/home/frank/installation/winxp #
```

I recommend copying the content of the entire subdirectory to a save place. Just in case, you never know!

```
cp -R /home/frank/vmware/Windows XP Professional /home/frank/Backup
```

That's it – how easy can it be? There is no need any more to keep VMware Workstation on your system. It will work the next 29 days but we will use the free VMware Player instead. To install the “Player” it will be necessary to delete the “Workstations” software. Just open your Linux console and use the following commands:

```
su
rpm -e VMwareWorkstation
```

Step 4: Installing VMware Player

It's now time to install VMware Player. We'll use it to run Windows XP and to install and run GoogleEarth. Open your favourite Linux console, get super user permissions and go to your installation directory:

```
su
cd /home/frank/installation
rpm -i VMware-player-1.0.1-19317.i386.rpm
```

VMware Player is now installed on your system. Before we can start it first time, we have to configure it using the following command as super user.

```
/usr/bin/vmware-config.pl
```

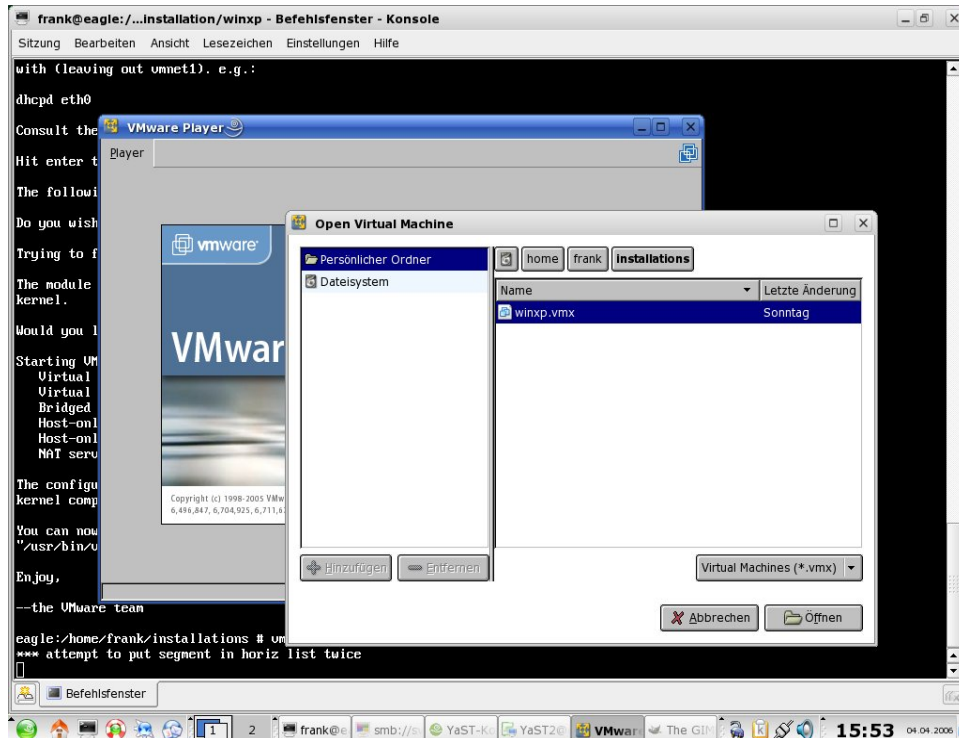
Please use the same settings you've used already in Step 3 while installing VMware Workstation.

Run VMware Player after the installation like this:

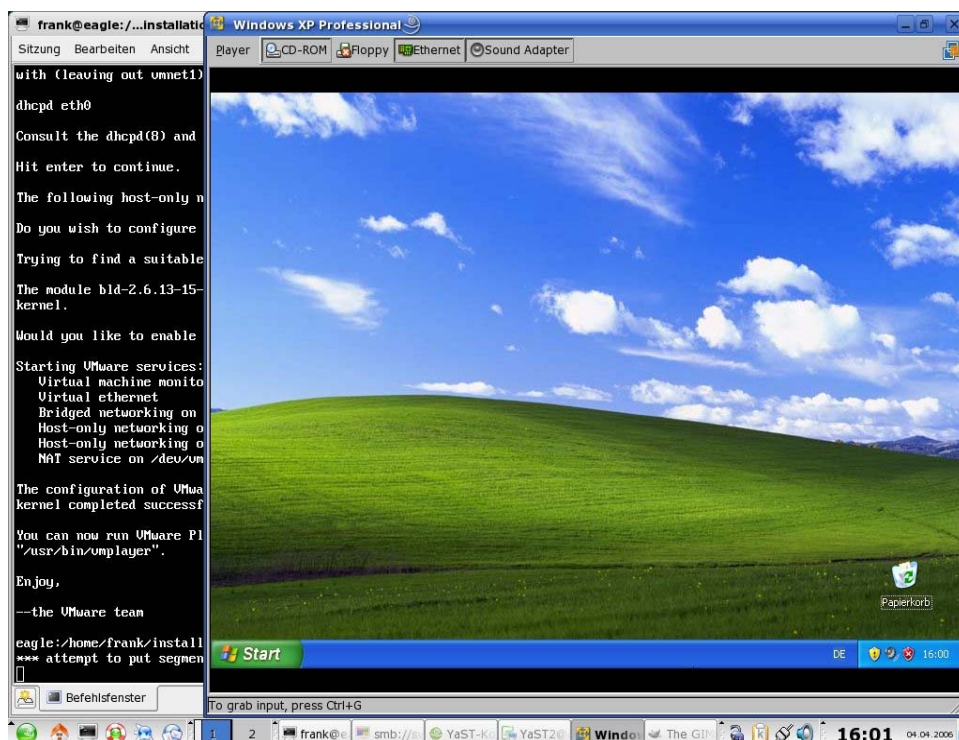
```
/usr/bin/vmplayer
```

Step 5: First run and GoogleEarth installation

This will be already the last step in our workshop. After starting VMware Player we just have to find the correct vmx file. Please go to your file system where you stored the Windows virtual machine and open it.



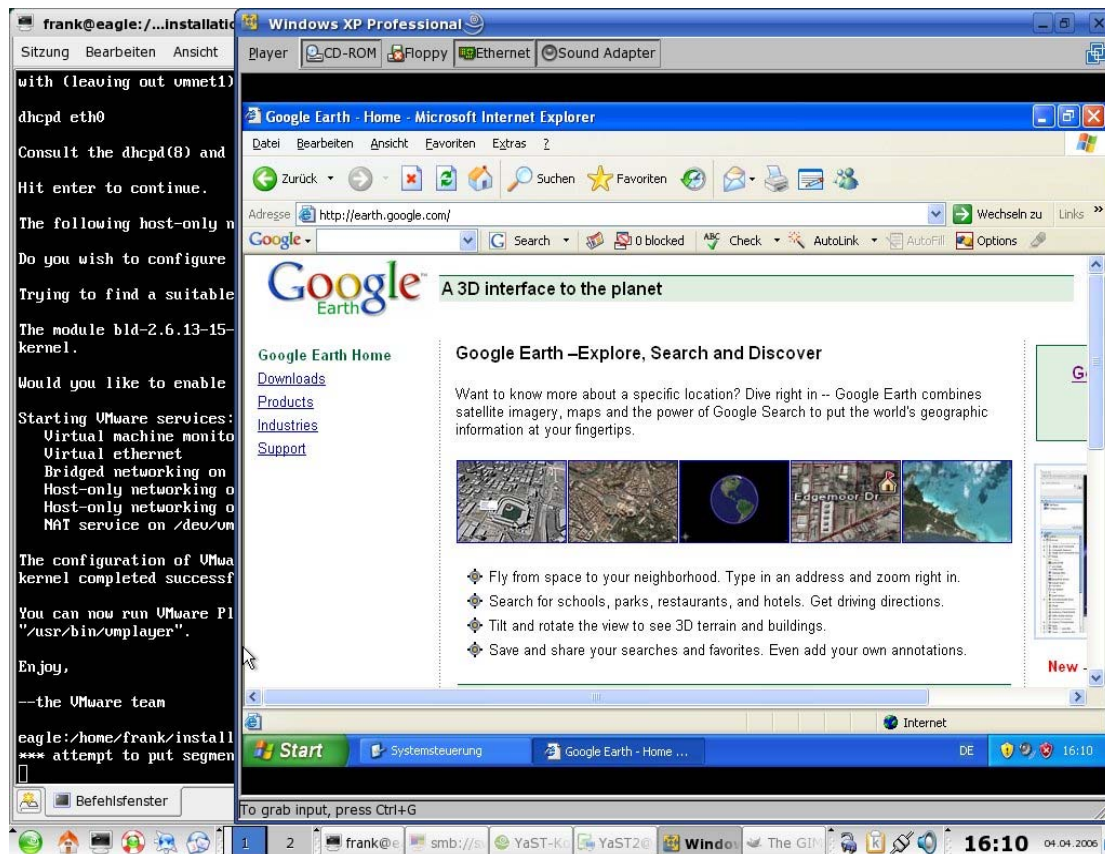
Windows should start nice and shiny in a new window.



First make sure that the Internet connection on your Linux PC is up and running and the Windows virtual machine is also able to browse the net. To check this, open the Internet Explorer and browse to the following website:

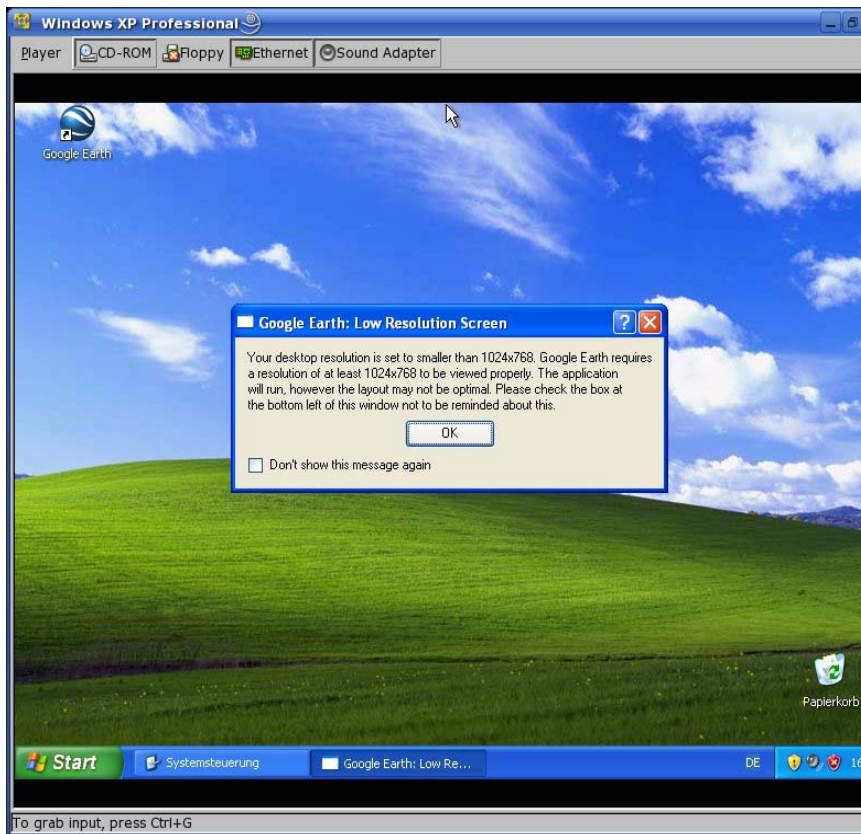
<http://earth.google.com/>

You should now be able to download GoogleEarth software.

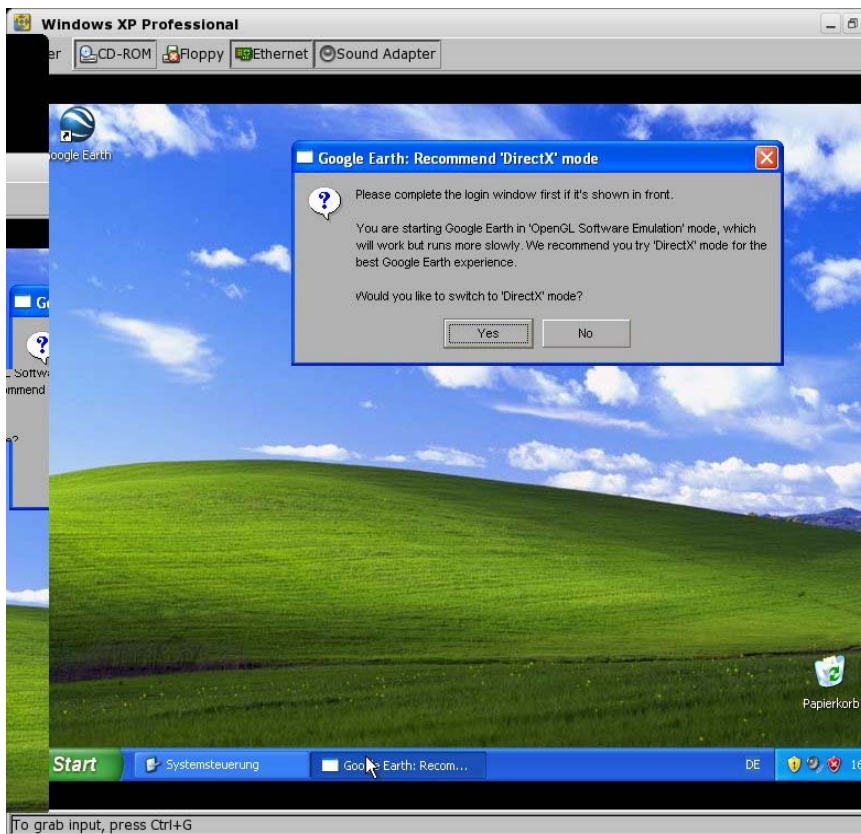


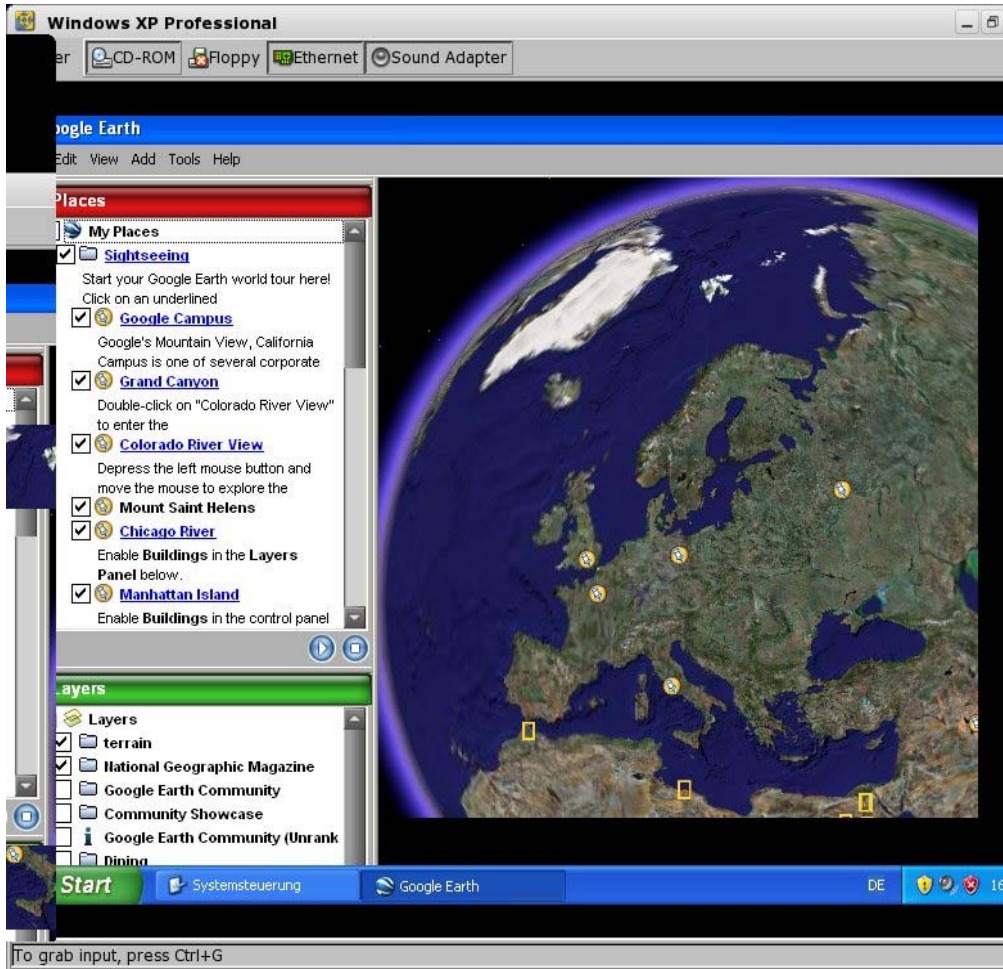
You can always leave the Windows environment by using the key combination **CTRL+ALT**.

While downloading the software make sure to have the correct display settings. GoogleEarth requires a resolution of at least 1024x768 to be viewed properly.

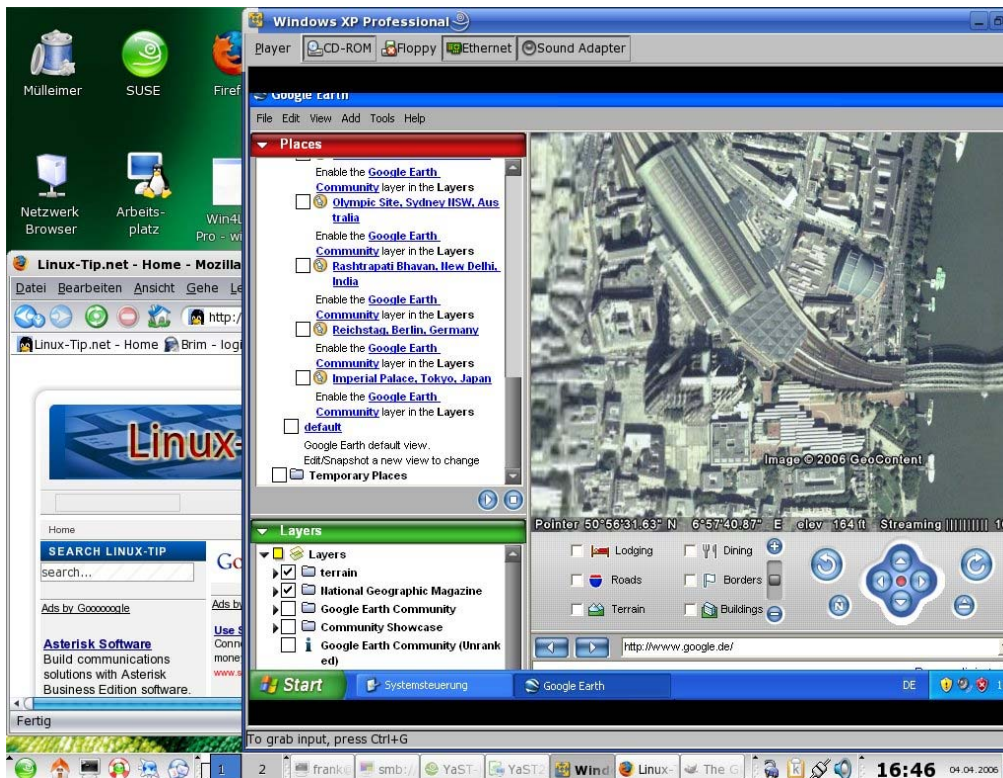


The next question you should answer with “No”. We will use the “OpenGL Software Emulation” mode to run GoogleEarth.





Hit Ctrl 5 to open a Search box and fill your favourite destination in.



If you like to “Autostart” Windows XP in your KDE session, you have to create a file **startWindowsXP** with the following content:

```
#!/bin/sh
vmplayer /home/frank/installations/winxp/Windows\ XP\ Professional.vmx
```

(Remark: Use the correct location of your **vmx** file)

Store the file in the following directory und make it executable:

```
cp startWindowsXP /home/frank/.kde/Autostart
cd /home/frank/.kde/Autostart
chmod 744 startWindowsXP
```

Conclusion:

In the VMware environment GoogleEarth is running without any problems. I also used Wine in one of the older workshops but had a lot of trouble to get it running. I had to live with some deficiencies (no menus, bad fonts etc.).

<http://www.linux-tip.net/cms/content/view/215/6/>

This solution seems to work much better but also reasonable fast and stable. The only disadvantage I can see in this solution is that you need an installable Windows version.

But if you have or can get a Windows CD (XP or 2000) then you really can fulfil your “dream of flying” ever on a Linux machine for free.