

# “Want to know more about a specific location?”

How to install Google Earth  
on Linux Suse 10.0 using Wine in 5 steps?

By Frank Neugebauer

<http://www.linux-tip.net>

linux-tip@web.de

Last Modified: 08/01/2006 17:29:00



## **0. Introduction**

Google Earth was created to put satellite imagery and other geographic information right on the (Windows) desktop. Unfortunately no Linux version is available yet. In the meantime the Linux Community was trying to get Google Earth running on a Linux Desktop using Wine. This Tutorial will explain how to install and run it. To be honest, it is very easy to install and to run it, but you have to live with some deficiencies:

You have to disable menus (using Ctrl+1 and Ctrl+2). It is possible to use the menus on the top, if you know where they are. The fonts are crazy. It seems that they are too far apart for the status bar and map labels. So I recommend disabling the status bar as well.

Nevertheless, if you have no Windows machine around you and would like to display and view satellite imagery but also to handle and process it in other Linux application, this is the way how to do it.

### **Step 1: Getting the software**

To get the whole thing running we need the following software:

- Suse Linux 10.0  
[http://www.novell.com/products/suselinux/downloads/suse\\_linux/index.html](http://www.novell.com/products/suselinux/downloads/suse_linux/index.html)
- Wine  
<http://www.winehq.org/site/download>
- GoogleEarth.exe  
<http://earth.google.com/downloads.html>
- DCOM98.exe  
<http://www.microsoft.com/downloads/>
- Psapi.dll  
<http://www.dll-files.com/dllindex/dll-files.shtml?psapi>

Download the above mentioned software and store it in the user's home directory. In this workshop I stored everything in **/home/frank**.

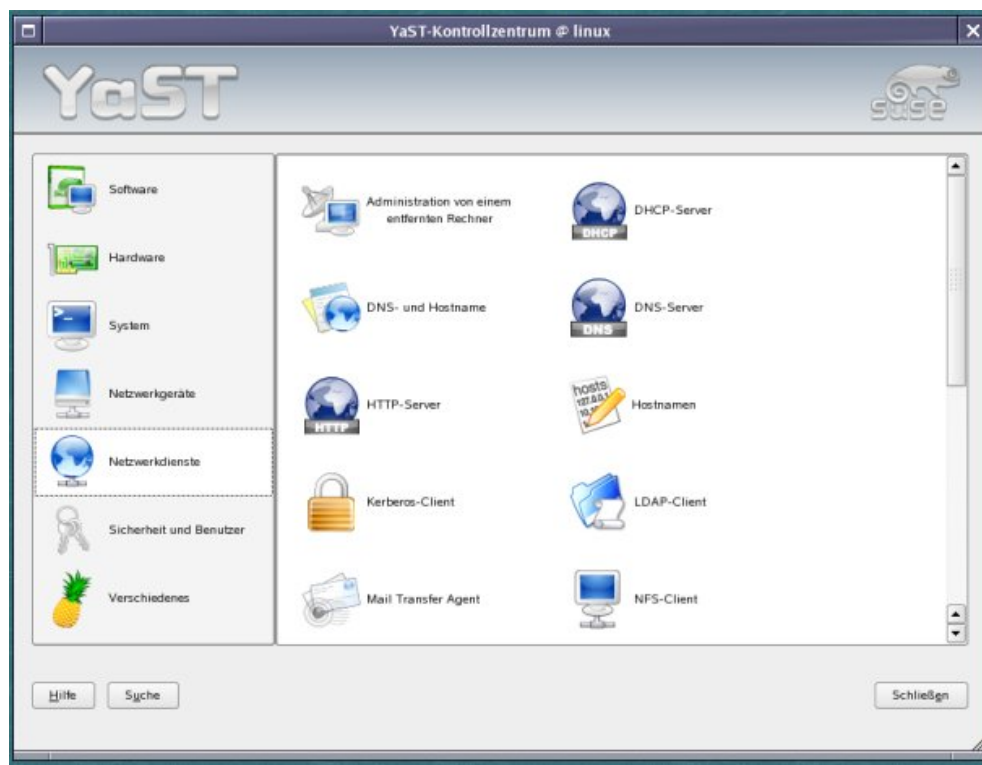
## **Step 2: Suse 10.0 Installation**

I don't want to explain how to install Suse. It is very easy these days. If you need help, please use the following link:

<http://www.linux.org/dist/reviews/suse10.html>

It is now time to specify which programs you wish to install on your system. There are thousands of packages available for *SUSE Linux*, and to make it simpler to manage the packages have been placed into groups of similar applications. We just need a basis system. Save time and hard disk space and just install the necessary files. Please make sure to install Microsoft True Type Fonts.

**Remark:** You will later have the possibility to add and remove software packages using YAST.



Want to know more about a specific location?

<http://www.linux-tip.net>

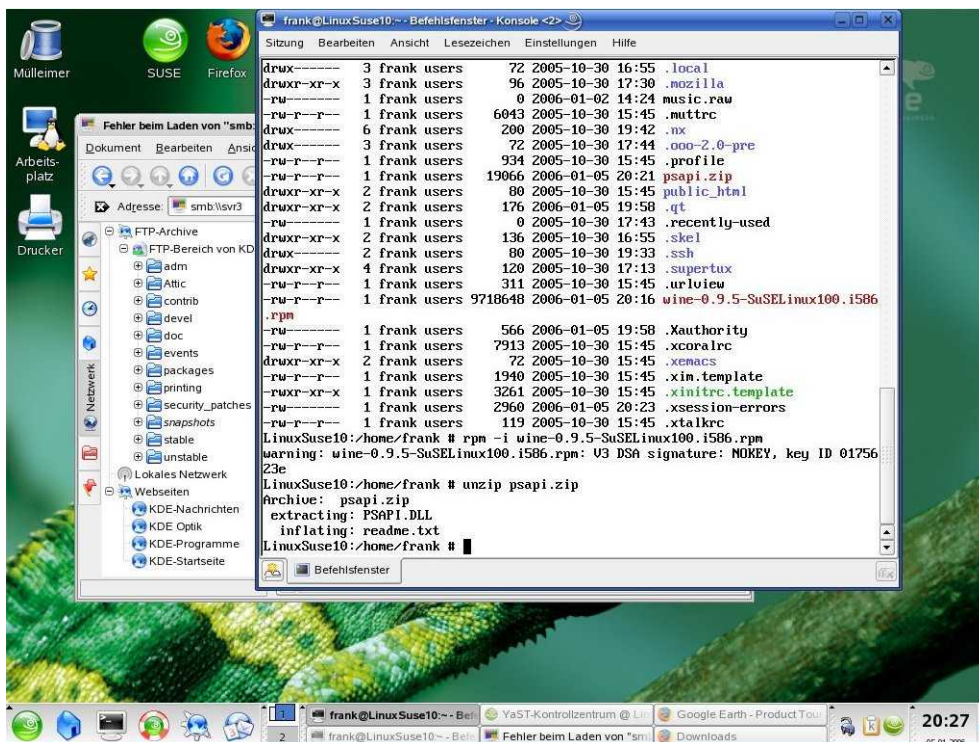
Page 3/10

### Step 3: Installing Wine

According to WineHQ Webpage: "Wine is a translation layer (a program loader) capable of running Windows applications on Linux and other POSIX compatible operating systems. Windows programs running in Wine act as native programs would, running without the performance or memory usage penalties of an emulator, with a similar look and feel to other applications on your desktop".

You downloaded already the latest version (wine-0.9.5) in Step 1. It is now time to install it with root permissions like this:

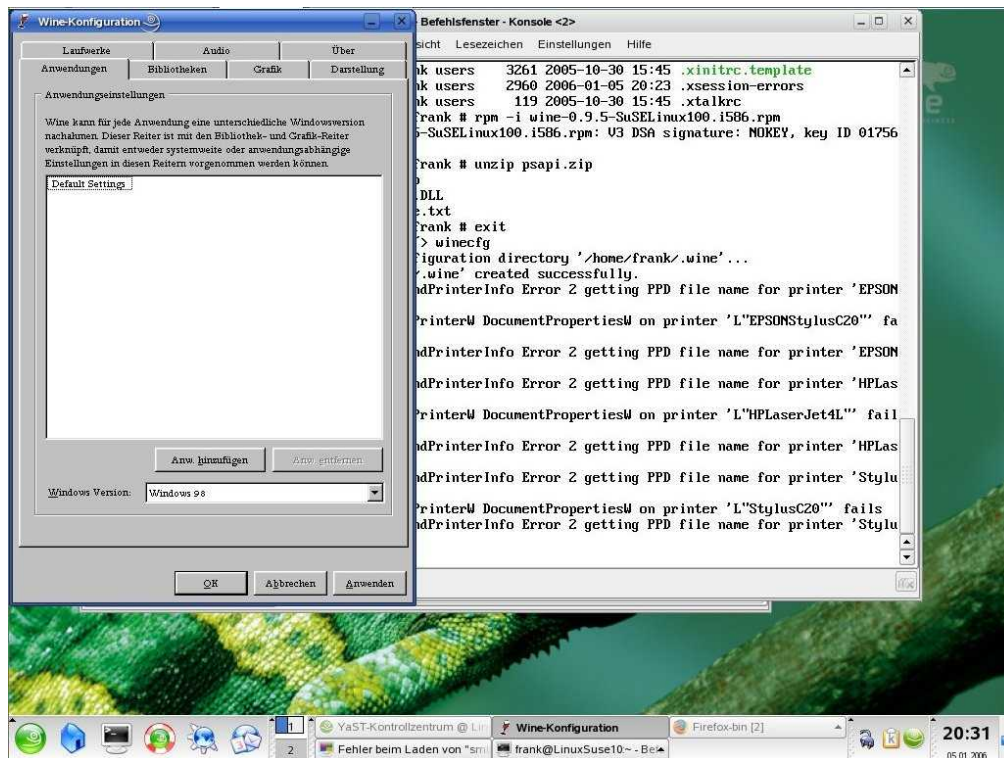
```
su  
rpm -i wine-0.9.5-SuSELinux100.i586.rpm
```



Next we have to configure Wine to simulate a **Windows 98** system. To do so, please go back to a normal user (in our case frank) and run winecfg from the user's home directory. Wine will create all necessary subdirectories for you.

```
cd /home/frank  
winecfg
```

Again, do not forget to set the Windows Version to Windows 98 like this:



## Step 4: Install all necessary dll and exe files

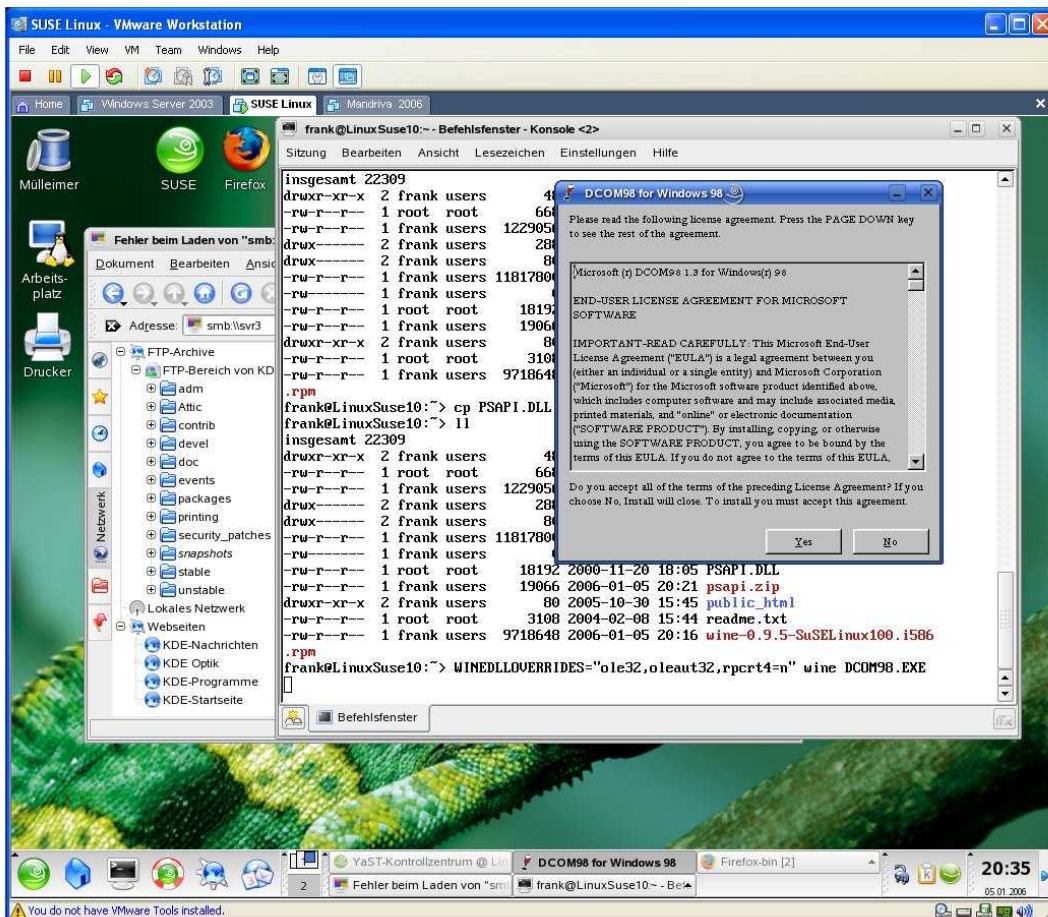
Just unzip the file psapi.zip you downloaded in step 1 and copy the dll to the windows system32 directory like this:

```
cd /home/frank
unzip psapi.zip
cp psapi.dll /home/frank/.wine/drive_c/windows/system32
```

Next we have to install dcom98.exe like this:

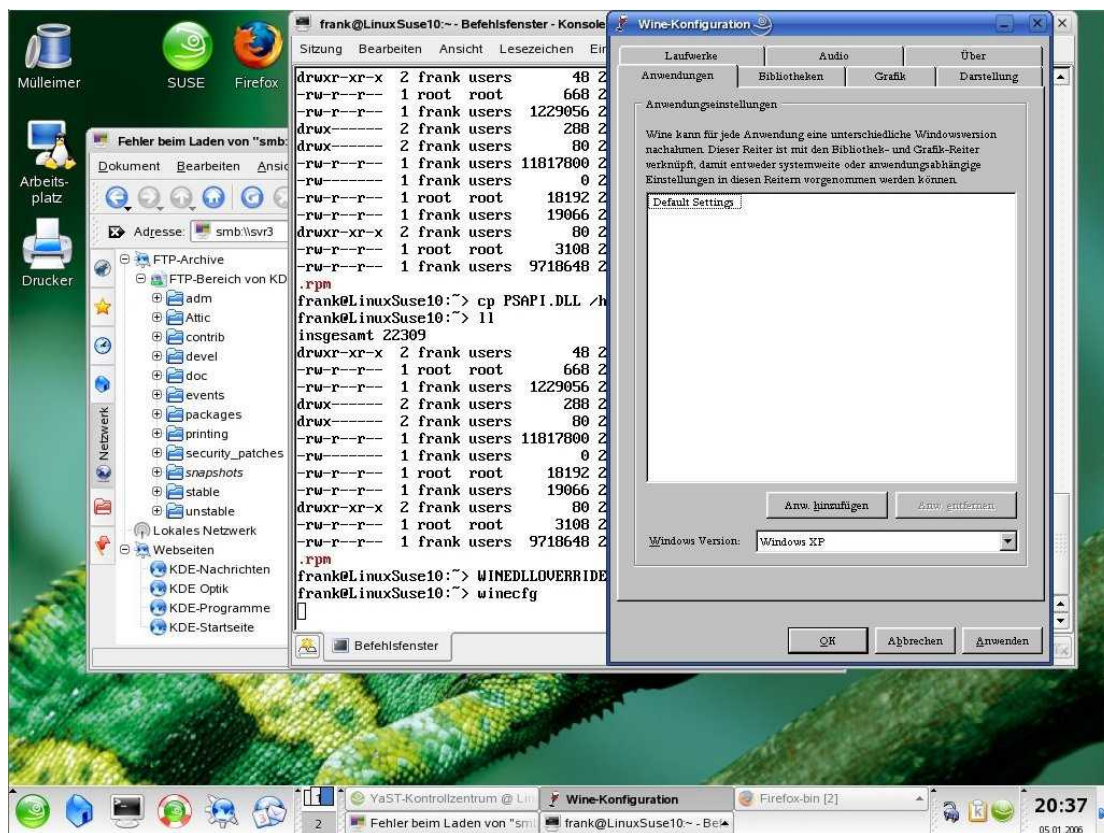
```
cd /home/frank
WINEDLLOVERRIDES="ole32,oleaut32,rpcrt4=n" wine dcom98.exe
```

Wine will ask you to install DCOM98 for Windows 98. Answer with yes like shown below:



Finally it is necessary to run winecfg again to prepare the GoggleEarth installation and to set the Windows Version to **Windows XP**.

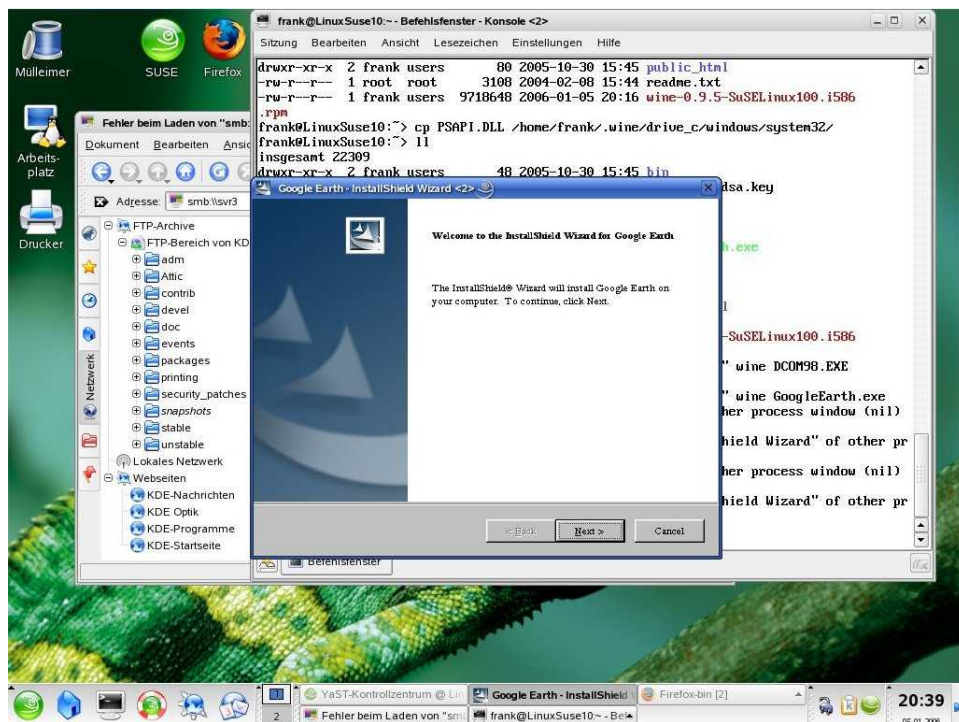
```
cd /home/frank
winecfg
```



## Step 5: Installing and run GoogleEarth

This will be already the last step in our workshop. Just run the following commands from the console similar to what we did in step 4.

**WINEDLLOVERRIDES="ole32,oleaut32,rpcrt4=n" wine GoogleEarth.exe**



Please watch the installation process. The setup will create GoogleEarth in the following directory:

**/home/frank/.wine/drive\_c/Programme/Google/Google\ Earth**

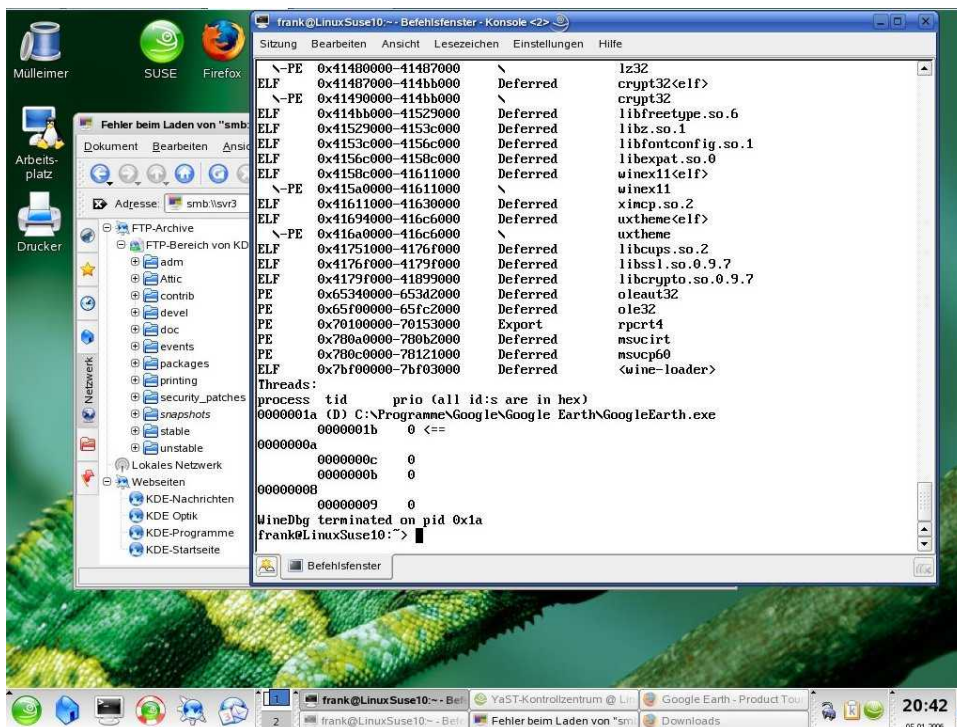
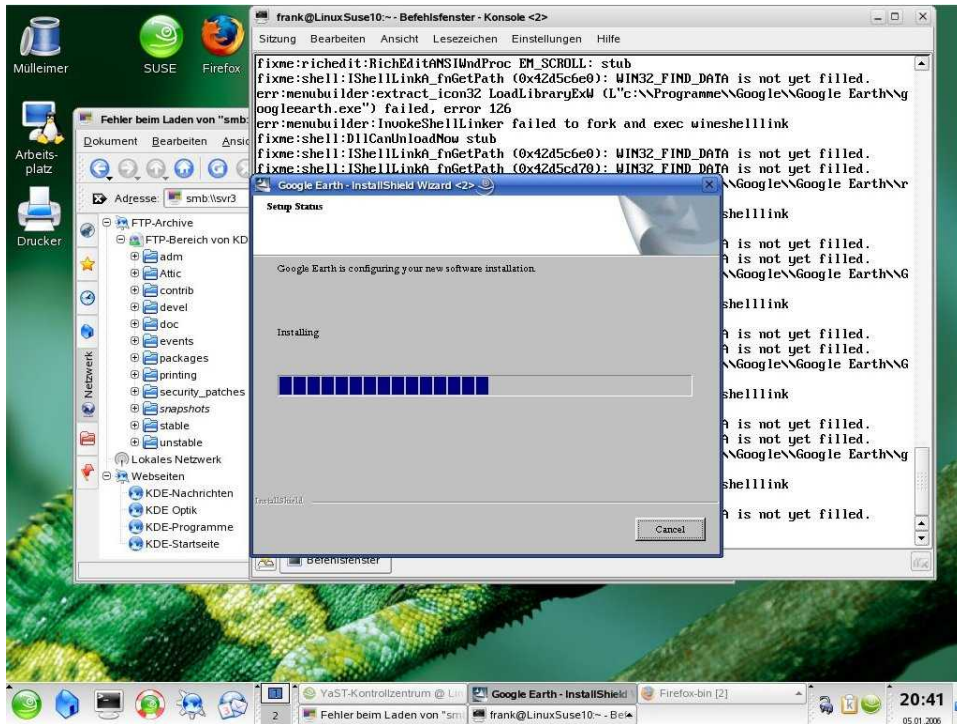
or

**/home/frank/.wine/drive\_c/Program\ Files/Google/Google\ Earth**

Want to know more about a specific location?

<http://www.linux-tip.net>

Page 8/10



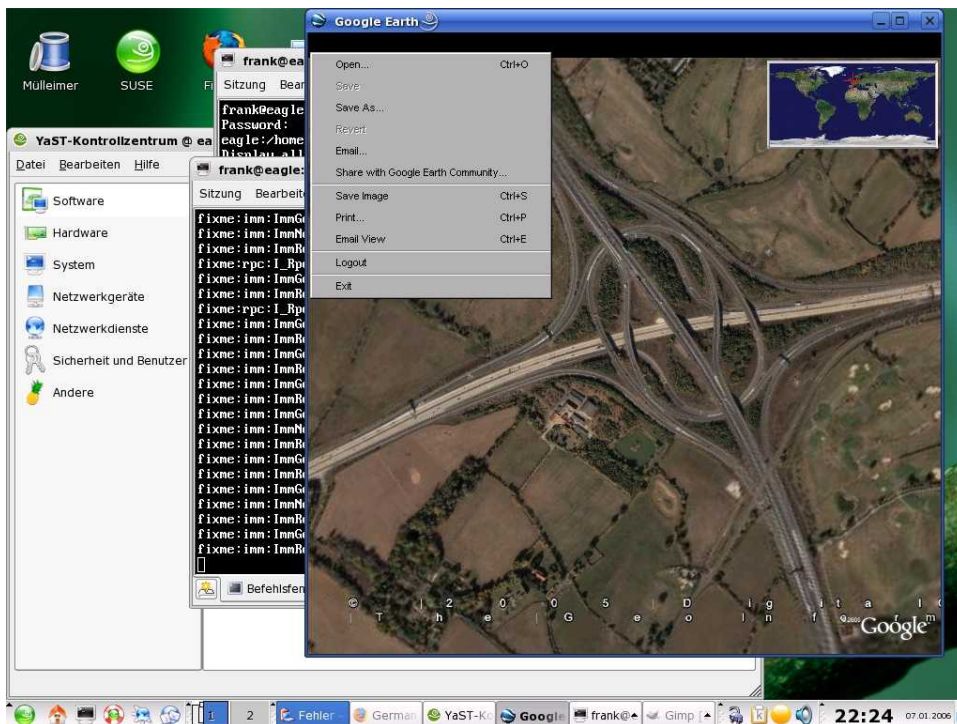
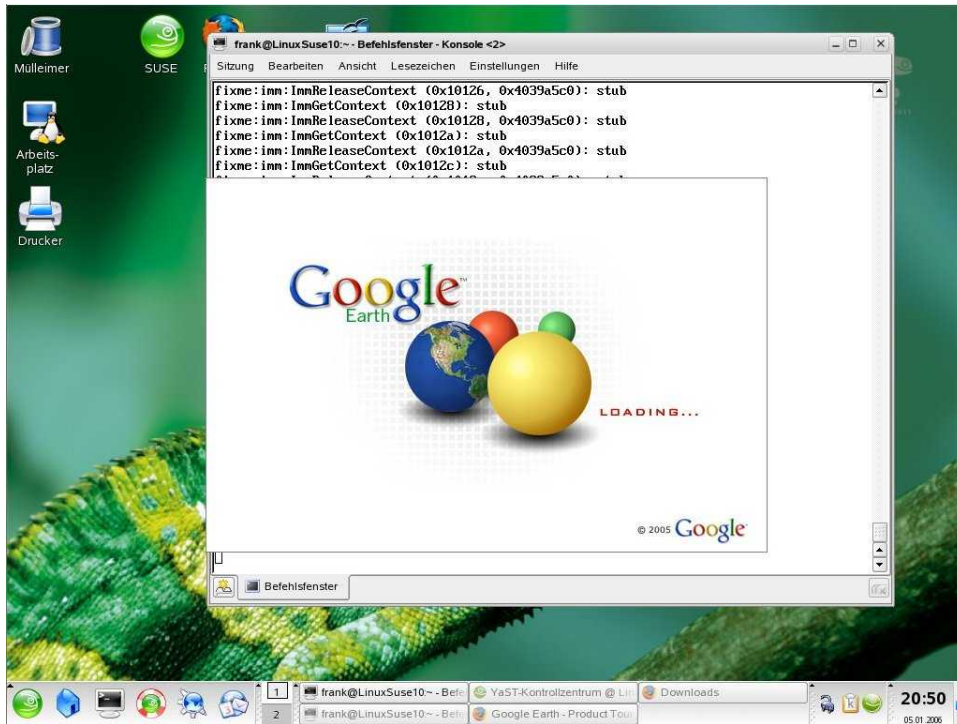
Finally you can run GoogleEarth.exe with the following command:

```

WINEDLLOVERRIDES="ole32,usp10,msvcrt=n" wine
/home/frank/.wine/drive_c/Programme/Google/Google\ Earth/GoogleEarth.exe
  
```

Want to know more about a specific location?

<http://www.linux-tip.net>



If you have any problems with the installation, you'll find all related posts here:

<http://appdb.winehq.org/appview.php?versionId=3254>

Want to know more about a specific location?

<http://www.linux-tip.net>